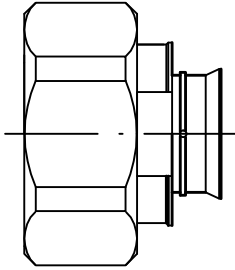
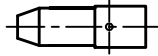


# CABLE ASSEMBLY INSTRUCTIONS - RFD-1601DS-H4

MAIN BODY



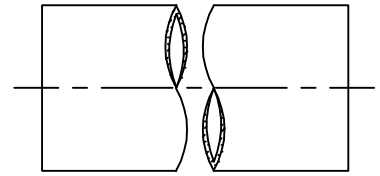
PIN



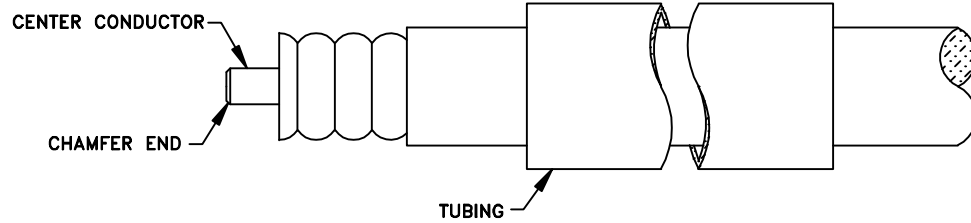
SPACER



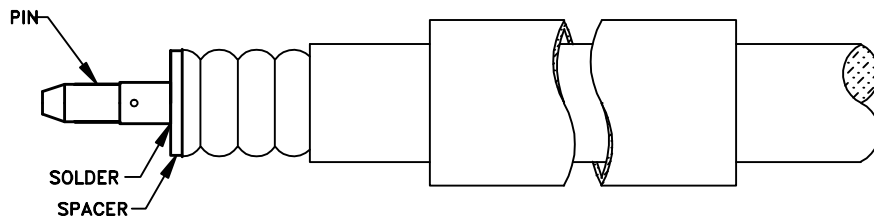
TUBING



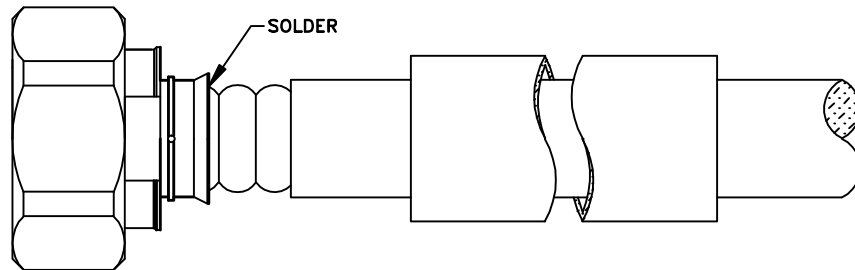
STEP 1



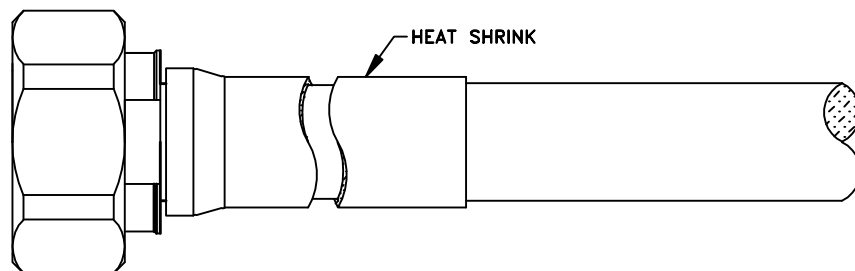
STEP 2



STEP 3



STEP 4



Step 1: Cut end of cable evenly. Strip cable to dimensions shown on connector outline drawing. All cuts are to be clean and square. Do not nick center conductor when cutting. Chamfer end with a file to break sharp corner for smooth entry into rear pin. Slide heat shrink tubing onto cable.

Step 2: Slide spacer onto cable center conductor. Insert pin into center conductor until it flush with spacer. Solder pin in place.

Step 3: Slide the cable assembly into the connector's rear body until it yields in place and solder.

Step 4: Slide the tubing until it yields against connector body and heat shrink in place.

RFD-1601DS-H4 AP.DWG

**RF CONNECTORS**

07/13/18

7610 Miramar Road, San Diego, CA 92126-4202 - (858) 549-6340  
 (800) 233-1728 - Fax (858) 549-6345 E-mail: rfi@rfindustries.com - www.rfindustries.com

CZ