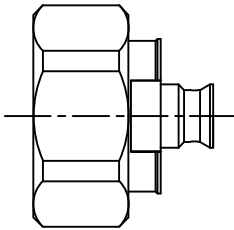


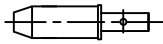
CABLE ASSEMBLY INSTRUCTIONS

RFD-1601-HPL

MAIN BODY



PIN

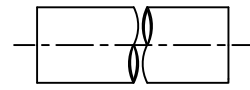


SPACER

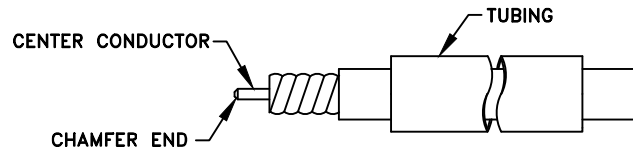


2:1

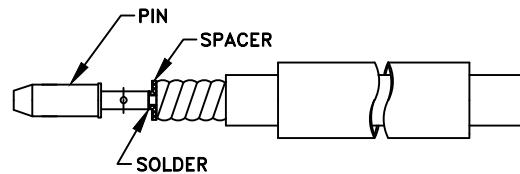
TUBING



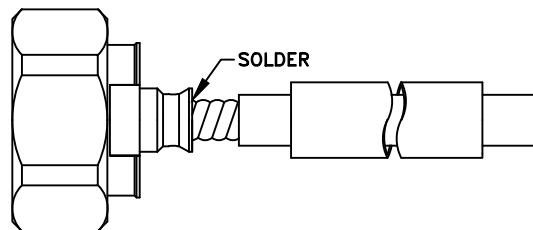
STEP 1



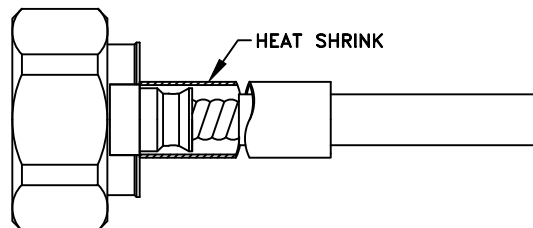
STEP 2



STEP 3



STEP 4



Step 1: Cut end of cable evenly. Strip cable to dimensions shown in catalog or on outline drawing. All cuts are to be clean and square. Do not nick center conductor when cutting. Chamfer end with a file to break sharp corner smooth for entry into rear contact. If using strain relief or heat shrink tubing slide onto cable first.

Step 2: Slide spacer onto cable center conductor. Insert pin onto center conductor until it butts with spacer. Solder pin in place.

Step 3: Slide the cable assembly into the connector's rear body until it comes to a stop and solder.

Step 4: Slide the tubing until it yields against connector body and heat shrink.

RFD-1601-HPL AP.DWG

RF CONNECTORS

9/11/15

7610 Miramar Road, San Diego, CA 92126-4202 - (858) 549-6340
(800) 233-1728 - Fax (858) 549-6345 E-mail: rfi@rfindustries.com - www.rfindustries.com

CZ